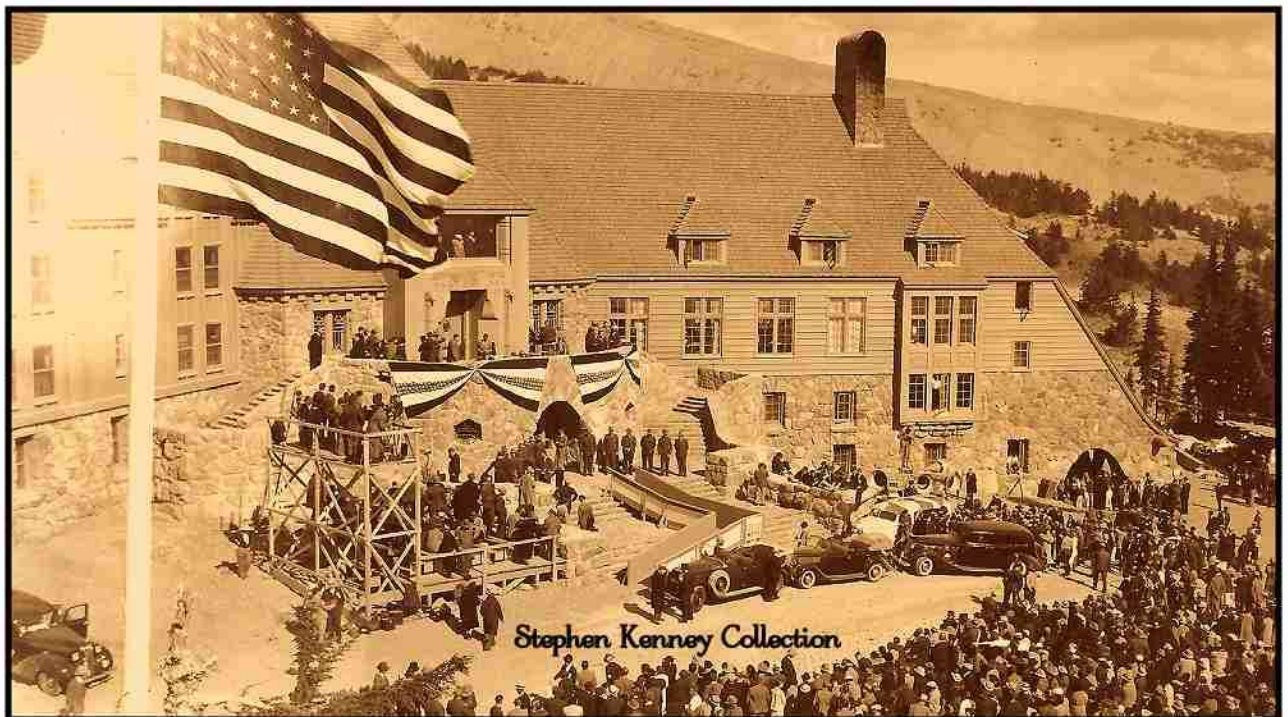




# WEBFOOTER EXTRA

September 2012

## TIMBERLINE LODGE CELEBRATES 75 YEARS



Dedication of Timberline Lodge on Sept 28, 1937 by President Franklin Roosevelt.

### WEBFOOTERS POST CARD CLUB

PO Box 17240  
Portland OR 97217-0240

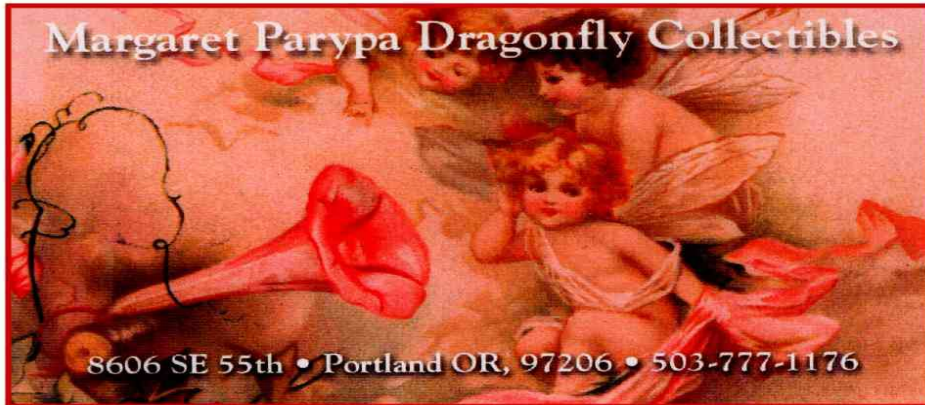


[www.thewebfooters.com](http://www.thewebfooters.com)



### In this issue

**Celebrating 75 Years at Timberline Lodge on page 4**



Located at:

# **FARMHOUSE ANTIQUES**

*8028 SE 13th Avenue in Historic Sellwood 503-232-6757*

Tuesday thru Sunday: 11 to 5

(paid advertisement)

**THANKS TO OUR ADVERTISERS FOR THEIR  
SUPPORT WHICH HELPS OFFSET OUR EXPENSES**

A large advertisement for the 33rd Annual Antique Paper Show. The top half is a sepia-toned photograph of a bull team pulling a wagon. The wagon has a sign that reads "OREGON CITY FRONTIER DAYS JULY 2-3-4". A cowboy is riding a horse in the team. Below the photograph, the text "33RD ANNUAL" is written in a small font. The main title "ANTIQUE PAPER SHOW" is in a large, bold, serif font. Below the title, the date and location "APRIL 20-21, 2013 KLIEVER ARMORY - 10000 NE 33RD DRIVE - PORTLAND, OR" are printed. At the bottom, the text "WEBFOOTERS POST CARD CLUB FREE ADMISSION - FREE PARKING WWW.THEWEBFOOTERS.COM" is displayed in a bold, sans-serif font.



**Northwest Collectibles Presents**

**The Largest Antique Paper Shows in the Northwest**

**THE GREATER PORTLAND**

**POSTCARD, STAMP & ANTIQUE PAPER SHOW**

**October 20-21, 2012**

**Kliever Armory**

**10000 NE 33rd Drive  
Portland, Oregon**

**Old Postcards, Photographs, Stereo View Cards, Books,  
Stamps, Valentines, Matchbooks, Magazines, Prints  
Maps, Trade Cards, Movie Posters and Much More!**

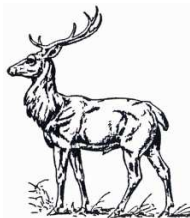
**Show Hours:**

**Saturday: 10 am to 6 pm  
Sunday: 10 am to 4 pm**

**Admission: \$1 (Good both days)**

**Upcoming Shows:**

**Portland, Oregon  
at Kliever Armory  
Feb. 16-17, 2013**



**Kent, Washington  
at Kent Commons  
Feb. 9-11, 2013**

**Call or Write:**

**Terry Weis  
601 NW 72nd Circle  
Vancouver, WA 98665-8462  
503-679-4755**

**Jeremy LeRoque  
5881 Live Oak Ln  
Redding, CA 96001-4617  
626-665-9435**

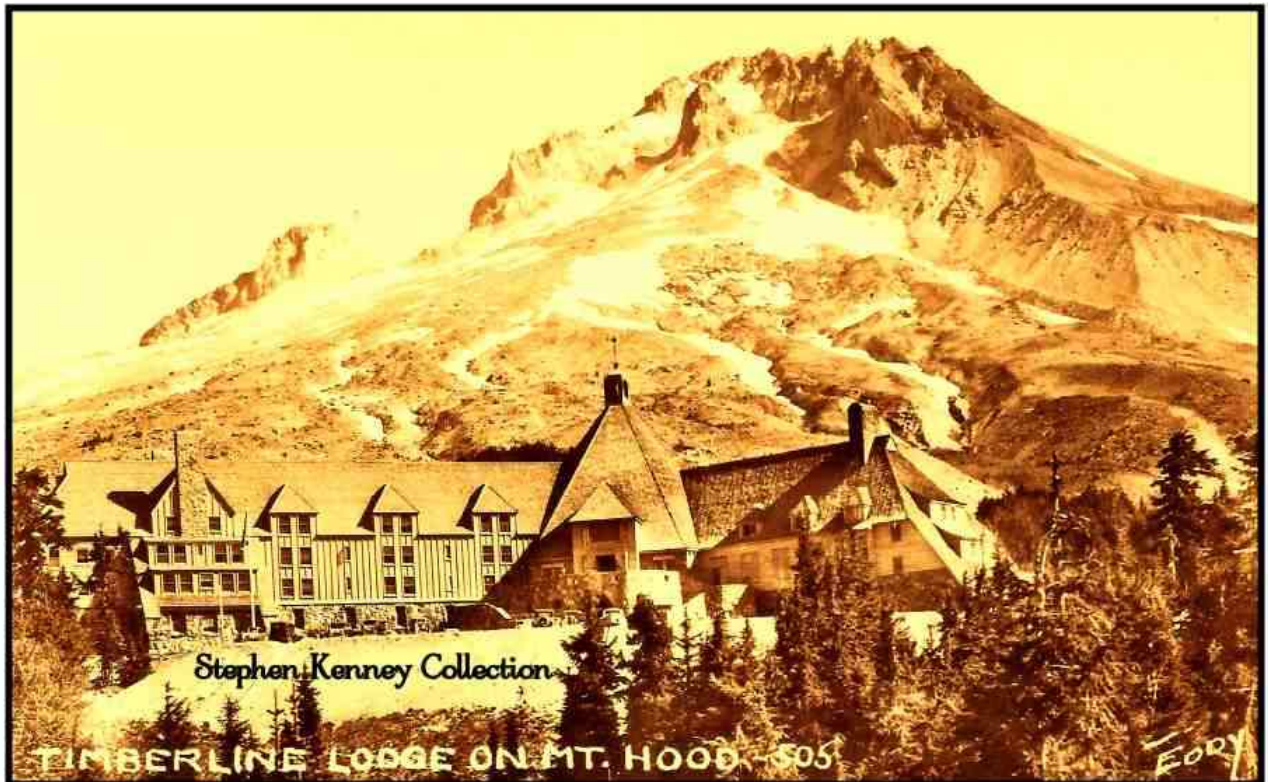
[www.postcardshows.com](http://www.postcardshows.com)

**FREE APPRAISALS  
FREE ADMISSION WITH THIS FLYER  
(paid advertisement)**



# CELEBRATING 75 YEARS AT TIMBERLINE LODGE

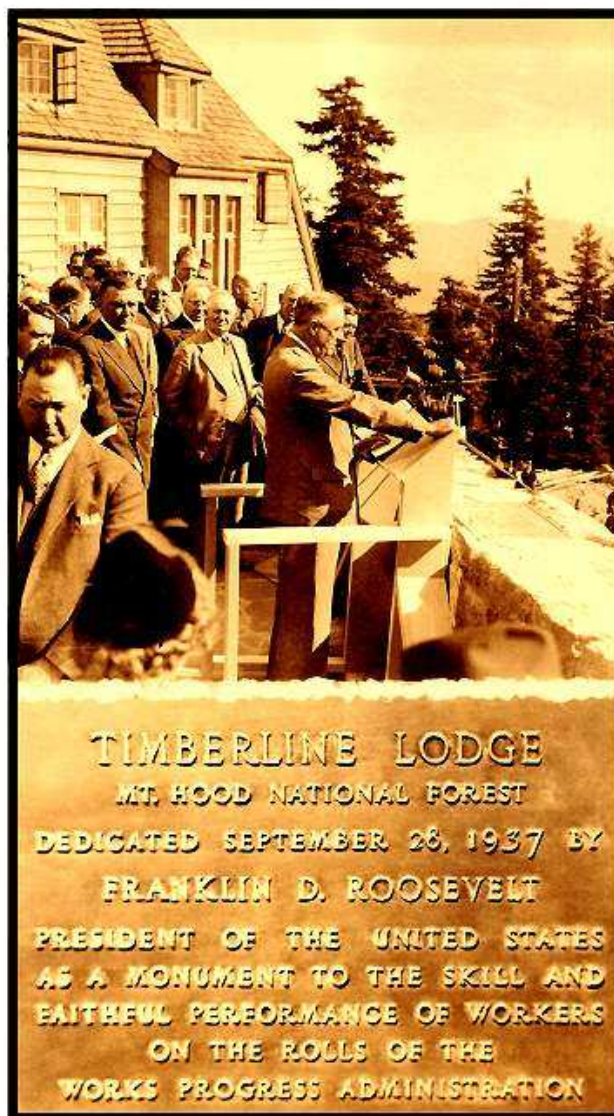
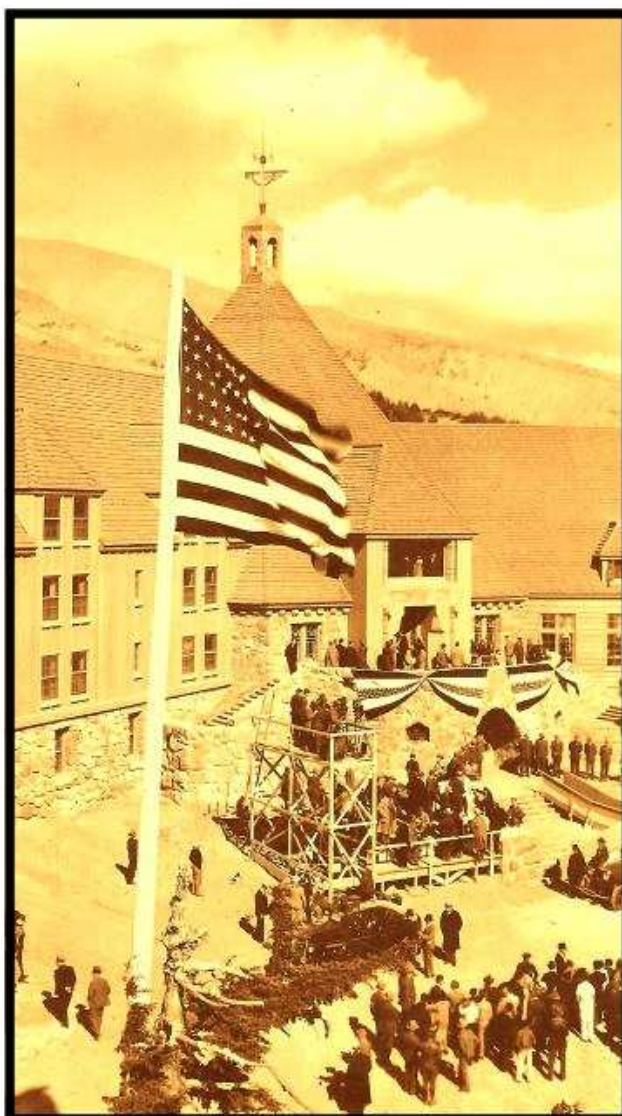
Declared a National Historic Landmark in 1977, Timberline Lodge was built on the south slopes of Mt. Hood, Oregon. It is one of the state's most popular tourist attractions, drawing nearly two million visitors every year. Considered an architectural wonder, it's still being used for its original intent—a magnificent ski lodge and mountain retreat for all to enjoy.



As part of the New Deal, President Franklin Delano Roosevelt established the Works Progress Administration (WPA) in 1935. The construction of Timberline was financed with nearly a million dollars from the WPA and additional funding from the Federal Art Project for furnishings and art featuring decorative themes of pioneers, Native Americans and wildlife.

Once the ground was clear of snow, construction of the lodge began in 1936 and it was completed in 15 months. This was considered a remarkable achievement. The lodge was primarily built by hand using native materials collected on site and from around the region.

All classes of laborers and craftsmen were employed in the construction of Timberline Lodge. There were stonemasons, plumbers, carpenters, steam-fitters, painters, wood-carvers, cabinet-makers, metal workers, leather-toolers, seamstresses, weavers, architects, artists and landscape planners. Workers came primarily from the WPA, but some jobs—including excavation, road building, and laying the terraces—were performed by the younger men in the Civilian Conservation Corps (CCC). Wildlife motifs and Native American symbols were hand-carved or welded into every corner of this three-story, 70-guest-room lodge.



(Above photos from the Stephen Kenney Collection)

On the morning of September 28, 1937, the President, Franklin D. Roosevelt, and the First Lady, Eleanor Roosevelt, left Bonneville Dam after dedication ceremonies and rode in an open touring car accompanied by a motorcade of 40 vehicles up to Mt. Hood. They arrived at Timberline Lodge to be greeted by 1,200 people who came to celebrate a monumental event for a monumental effort.



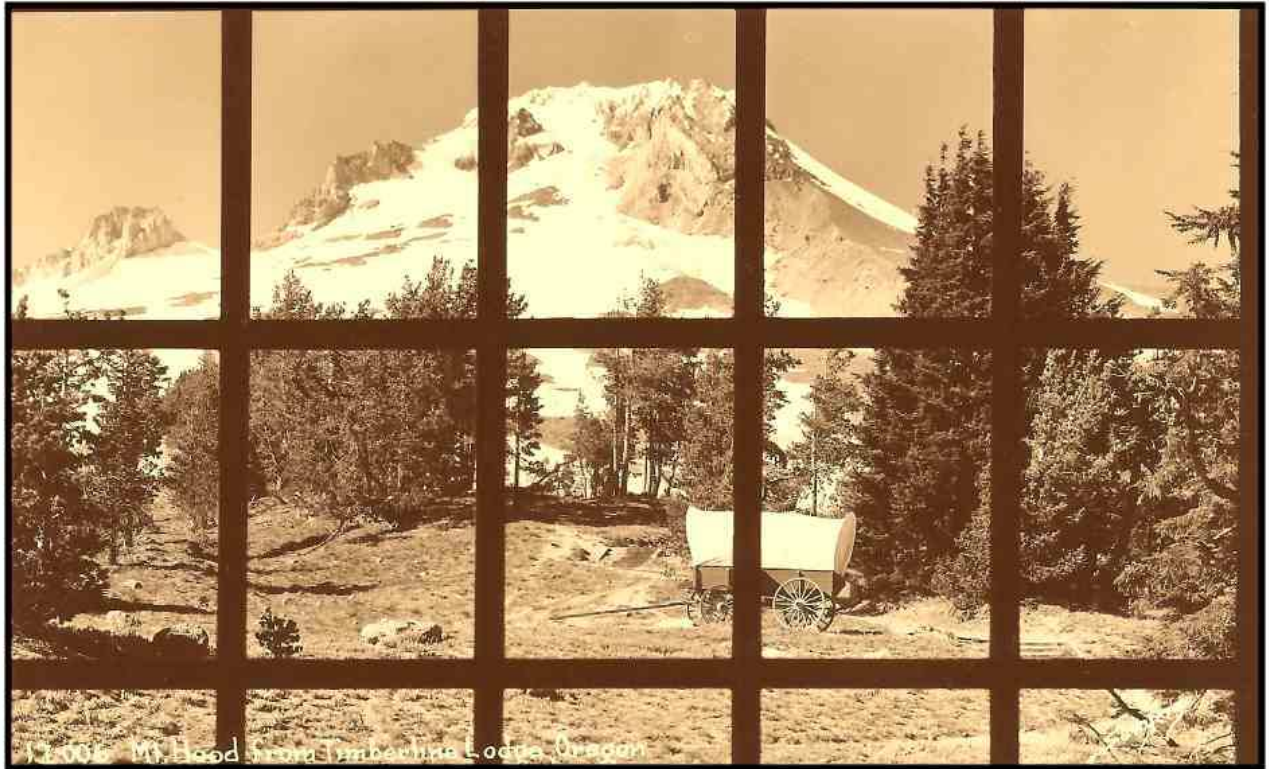
15-595 Ski Lounge - Timberline Lodge, Oregon

View of the Ski Lounge at Timberline Lodge.



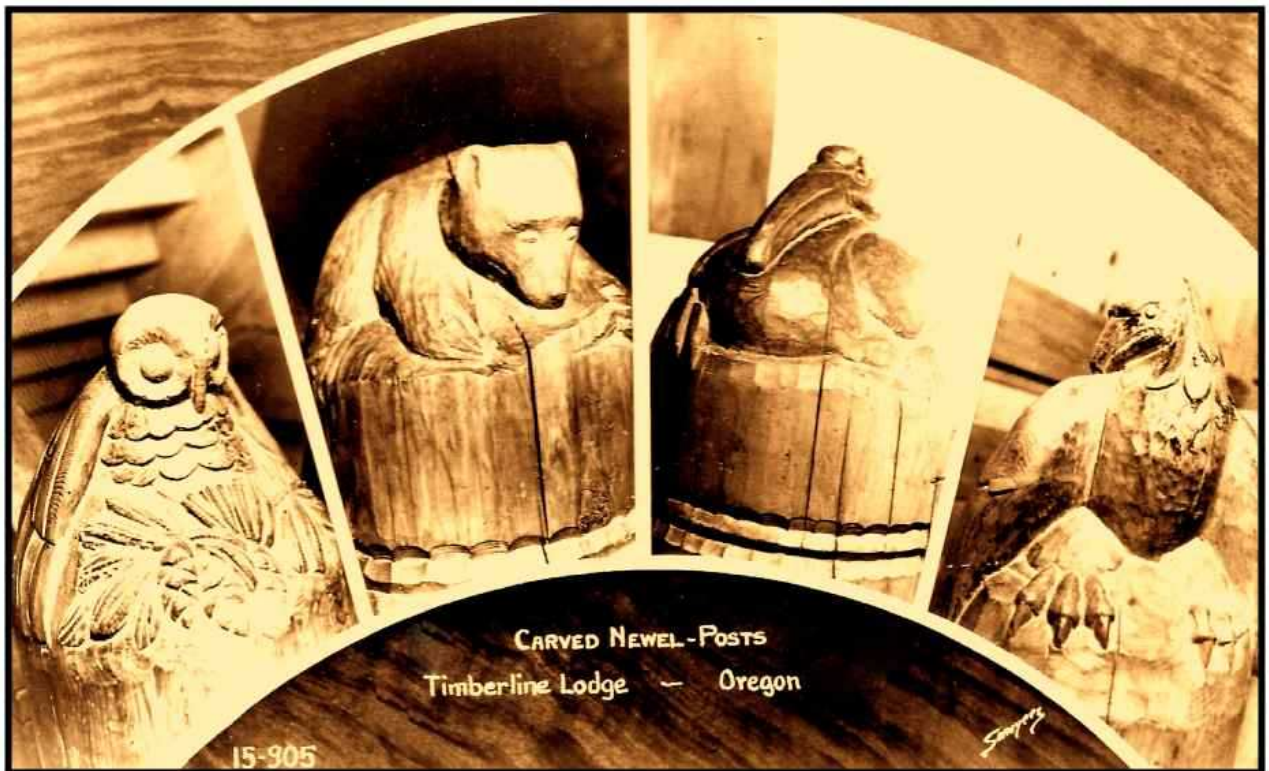
15-901 Coffee Shop - Timberline Lodge, Oregon

View of the Coffee Shop at Timberline Lodge.



View of Mt. Hood from Timberline Lodge.

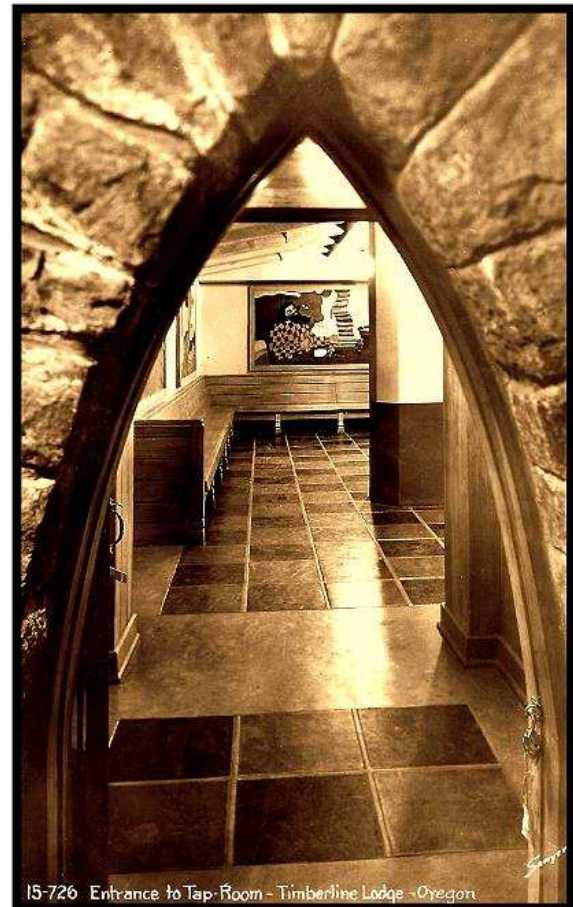
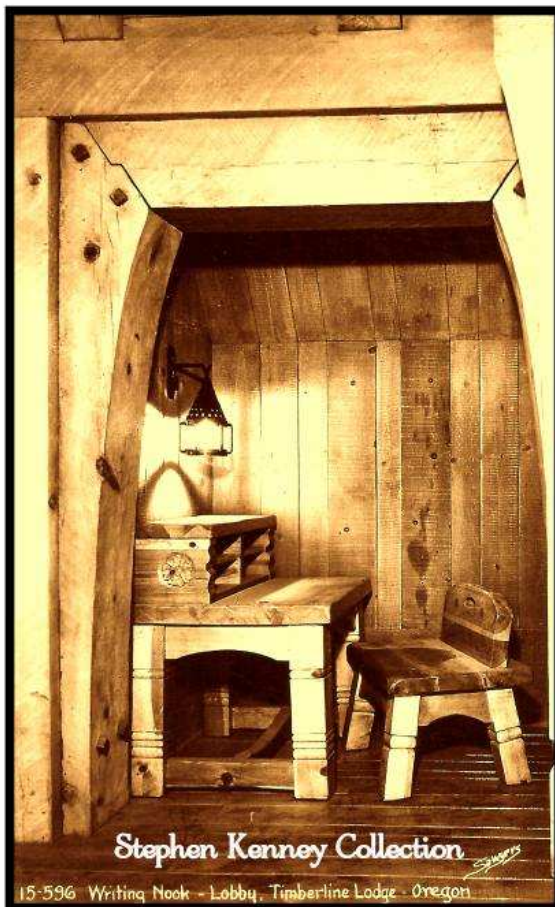
Timberline Lodge was used for filming seven movies including *The Shining*.



View of some of the beautifully carved newel posts at Timberline Lodge.



Several dogs were greeters or mascots for Timberline and some were used in rescue operations. The St. Bernard pictured above was named Gretel.



The writing nook is shown on the left and the entrance to the Tap Room is on the right.





Operation Santa Claus, which is a reindeer ranch near Redmond, Oregon, did some promotional work at Timberline in 1953.

When the original Magic Mile Chairlift opened in 1939, it was the first chairlift in Oregon and the second chairlift in North America, ushering in a golden era of skiing on Mt. Hood.


When World War II began, the Forest Service put Timberline Lodge in mothballs for the duration of the War. After it reopened, the lodge and ski facilities were not maintained well, and the Forest Service revoked the operating permit in 1955. Within months, Richard L. Kohnstamm was granted a new permit to operate the lodge. Kohnstamm cleaned up the lodge, re-established ski education programs, and planned festive events that made the lodge increasingly popular among Oregonians.

In the decades leading up to today, Timberline has seen many improvements. The C.S. Price Wing was added in 1975 to provide larger conference and event space. In 1981, the Wy'East Day Lodge was constructed to house all skier services and help reduce daily wear and tear on the historic lodge. Kohnstamm died in 2006, but his family continues to operate the lodge through R.L.K. and Company.



Several events have been planned to celebrate 75 years of history at Timberline Lodge. The U.S Postal Service will help Timberline Lodge commemorate its 75th year by issuing a special postmark in honor of the anniversary from 10 am to 2 pm on Friday, Sept. 28, 2012. A second postmark will only be available that day.

Webfooter Bill White will be displaying historical memorabilia from Timberline.



A historical organization hopes to turn the old Bull Run Powerhouse into a museum. They are celebrating the 100-year anniversary of the powerhouse on September 29, 2012 from 1 pm to 5 pm at the powerhouse. Webfooters Steve Kenney and Mark Moore will be displaying historical memorabilia relating to Bull Run from their collections.